

MHVwater Scheme News

Cracroft Capacity Upgrade

Message from the CEO

The start of the 2021/22 irrigation season marks the end of a busy period for infrastructure upgrades to our MH Open Race. With no changes required in the Ruapuna Line to enable the 20% additional delivery flow for M shareholders, the team have been incredibly busy focusing on the open race with workstreams including new automated gates, culverts, amended weirs and race cleaning/widening. A massive thank you to the team for their work and management of the project to deliver on time and under budget, especially given freight issues, covid restrictions, and flooding hurdles.

We have completed some small remedial projects on the Valetta Line with many of the main risk reduction workstreams planned to occur next winter. The design processes are currently well underway and we will engage with shareholders as we work through these plans.

Environmentally, the benefit of having inhouse expertise regarding groundwater monitoring has meant that our team swung into action following the flooding at the end of May to enact weekly testing of over 50 groundwater and surface water sites throughout the catchment. This weekly and real time information will be invaluable in building our knowledge of the nitrate response immediately following a large flooding event and as the pulse of water flows through the aquifer network. We have seen, on average, an increase in nitrate levels as a

result of the flood and we are now seeing those levels slowly drop back off as the pulse moves through the system. We are now back into our quarterly 140 + bore samples and will have updated information for the AGM in October.

During the season if you are supplementing your MHV delivered water with groundwater it is recommended that you know the nitrate level of this water and take it into account with your fertiliser calculations. A simple calculator is being developed for this and will be available soon. If you would like to get a nitrate test on your water please just call any one of our team and they will arrange this for you.

Lastly the AGM is on the 14th October and we look forward to seeing you, notwithstanding potential Covid restrictions, at the Hinds Hall and sharing refreshments with you following the presentations.

Ngā mihi
Mel



Melanie Brooks, Chief Executive

Authorised Land Use

With our new consent it is important that all MHV Shareholders have clarity on what they can do and what they need to do into the future to meet our consent conditions and our community aspirations to see improved environmental outcomes.

You will not have a specific nutrient loss number to adhere to, however you will have an Authorised Land Use (ALU). The ALU identifies:

- The FAVA triggers for a property, based on the maximum permitted seasonal land use which has occurred
- If a retrospective FAVA is needed
- A permitted land use which can be audited and easily monitored
- The parameters the property can operate within for land sales and leases without FAVA approval

A FAVA is required where a Shareholder seeks to vary the Authorised Land Use (ALU) on their Property. A variation includes, but is not limited to:-

- Any increase in irrigated area
- Any increase in winter grazing area
- Any permanent increase in stocking rate
- Any intensification of your dairy system (e.g. move from Dairy system 3 to Dairy system 2)
- Any change in land use

The Authorised Land Use for each property is determined using the information you have provided us through your FEP updates and Overseer nutrient budgets between 2014-2020 period or has been approved by a Farm Activity Variation Application. The period that defines the Authorised Land Use aligns with the 'reference period' in the Governments Essential Freshwater

Package and our new resource consent conditions.

Provided you continually improve efficiencies in your current farm system, we know we can meet our reduction targets. We believe this is the most transparent, fair and equitable way to manage nutrient reductions as opposed to only an Overseer number and it provides a much higher level of certainty for you around what you need to do.

We will be completing ALUs for all shareholder properties over the next 6 months and you will need to have an active OverseerFM account. We will let you know one month prior to completing your ALU to check and update your subscription if needed. MHV will pay your subscription on your behalf if your account is not active at the time your ALU is being prepared and will include the costs in your next Water Charge Invoice with a small admin fee to cover our costs.

Once your ALU is completed, we will send you a draft copy of your Authorised Land Use for review prior to it being finalised and you will have the opportunity to ensure all the information contained in the document is correct.

Whilst OverseerFM has recently been reviewed and its' shortcomings confirmed, the continued use of OverseerFM has been prescribed by Government in the short term. We are keeping a close eye on developments and providing feedback into Ministry/ECan as part of this ongoing process.

Please get in touch with Mel directly if you have any queries around paying the OverseerFM subscription or on the preparation of the Authorised Land Use.

Water Supply Agreements

As discussed at our shed meetings, the new MHV discharge consent (CRC185857) requires us to review and update our water supply agreement to capture the requirement for shareholders to meet the future nutrient reductions, ie the 36% reduction by 2035 (Clause 31 of CRC185857).

The requirement for shareholders to adhere to MHV Policy was already in our Water Supply Agreement, but ECan made it a consent condition for us to more explicitly refer to the environmental requirements.

As such we have updated our Short Form Water Agreement (available on our website) and taken the opportunity to more clearly articulate the requirements of shareholders and expectations of us.

Whilst there have been some changes the overall intent of the document remains unchanged.

The new Water Supply Agreement will take effect from 30 September 2021.

There is no requirement for shareholders to execute a new copy of the updated agreement, however, for consistency we will be updating these throughout the course of the next year with shareholders.

RDR Intake Inspection Shutdown

The irrigation season is officially underway again.

From 10 September, the irrigation season has officially commenced.

MHV has begun bringing in a small volume of water to wet the races and prepare for full flows.

RDRML need to undertake inspections of their intake. This was attempted on the 8th and 9th September but unfortunately river conditions were not suitable. This will require a shut down of the RDR canal and we will advise shareholders of this when river conditions are suitable and dates have been confirmed.



Permitted Change on Farm

On 17 August 2021 the MHV Board finalised the review of our Environmental Policies, which includes the Farm Activity Variation Application (FAVA) process, to ensure that we met the conditions of our newly granted resource consent CRC185857.

One of the changes to policy to reflect the minimal risk and to balance the benefits to the wider community was that no FAVA is required for increases in irrigation less than 10 ha (relative to September 2020), provided all of the following conditions are met:

- (a) New irrigation is spray or sub-surface
- (b) Property already audited as being an “A”
- (c) No other variation to land use occurs

Please speak to talk to the environmental team prior to any changes on farm, to ensure changes are captured and to determine whether you meet this permitted change exception or whether you need a apply for a FAVA.



FAVA and Sale & Purchase Timeframes

Completing the process required to assess a Farm Activity Variation Application (FAVA) or to prepare Authorised Land Use (ALU) documents and due diligence for a Sale and Purchase can be time consuming.

We encourage shareholders to allow plenty of time for these processes. It can take approx 5 weeks from the receipt of a **complete** FAVA application through to final Board approval or decline. In between, FAVA applications are assessed by the Environmental Decisions Panel, (a panel of independents) against MHV’s environmental policies. The EDP then provide a recommendation to the Board.

If you are thinking of buying or selling, or making a change on farm, please speak to the Environmental team as soon as possible.

Start of Season Reminders

Water Usage Records

Water usage records from the 2020-21 season are available on request from the office or info@mhvwater.nz

Mycoplasma Bovis

If your farm is impacted by M Bovis, please advise your scheme operator or the Environmental team as soon as possible.

It is important that we are aware of requirements to sign in or spray down vehicles when accessing your property and that we can support you around FEP audits.

Details will be treated with the upmost confidentiality.

Leasing or selling shares

If you are interested in leasing out or leasing in water, or selling shares please contact Jo on 027 335 5524 or info@mhvwater.nz and confirm you are comfortable for us to share your details with the wider shareholder base.

Please note:

- M share water must remain in the MH or Ruapuna infrastructure, and V share water within Valetta infrastructure, and is subject to the restrictions of the infrastructure.
- All leasing and transferring of shares is subject to approval by MHV and there must be no net increase in nutrient leaching as a result.
- Any financial arrangements around the leasing of water or selling of shares shall be the responsibility of the lessor and lessee (or seller and purchaser) to determine and enforce.

Backflow Prevention

If you are mainlining effluent, on our piped network, it is your responsibility to ensure that the non -return valve in your line is working to ensure there is no backflow into our system.

Please ensure you check your device as per manufacturer's recommendation.

Vehicles in Races

With approx. 320km of open races we remind you to please be careful around the races.

If you see a vehicle in a race please call your Scheme Operator (once everyone is safe) to manage any possible spills, water flow levels, to aid safe recovery and ensure we are aware of any damage.

Maintaining Banks of Open Races

To ensure the efficient delivery of water, it is essential that the integrity of our open races be upheld.

Damage to race banks can have repercussions on the effectiveness of the race system and we remind shareholders that:

Banks may be grazed as long as there is no pugging and there is no feeding out of supplement feed within the easement. At all times, the operations team has final decision regarding grazing a race and it is expected that stock will be removed, or numbers reduced, should staff request this;

Any works within the easement are to be approved;

- If fencing, please consult your scheme operator and ensure that access to the easement is maintained at all times for spraying and maintenance.
- All tree trimmings are to be removed from the easement to avoid entering the water way.
- Please mow roadsides regularly or bail following mowing to avoid grass entering the water way.

Any purposeful damage to our race banks, including but not limited to the alleviation of flood water, is a breach of the Water Supply Agreement and consequences may be applied.



Water Ordering Log In

Rubicon has reviewed their system security and as a result has introduced new password requirements.

Historically you have used a 4 digit PIN to access your water ordering however this level of simplicity puts the entire system at risk. From midday Wednesday 29 September you will be prompted to change your password to one which is between 7 and 12 characters long, and contains at least one uppercase, lowercase and numeric character.

If you require assistance, please contact Jo on 03 307 8389 or info@mhvwater.nz or Sam on 027 435 6251 or sam@mhvwater.nz

Water Ordering in Open Race

With the new season upon us, you will need to order water for your open race property.



Go to www.mhvwater.nz and click on the **Water Ordering** icon.

You will be taken to the login screen where you will be prompted to enter your User Number and Password.

Your **User Number** is your first and last name with no spaces. This can be in upper or lower case i.e. JOEBLOGGS or joebloggs

As above, you will be prompted to change your password. If you need assistance to reset your password, please contact the office on 03-307-8389 or info@mhvwater.nz.

Do you have a new Water Manager?

A change of season often brings with it a change of staff.

With the irrigation season now underway, it is an opportune time to check who has access to order water for your property and receive text notifications.

Please contact the office if you need to remove old staff or add new staff and we can update our systems.



Pipe and Open Race Easements

Work is continuing on the registration of easements on our piped networks and some of our open race properties. Tavendale and Partners and RMF Silva are undertaking this work on our behalf.

All surveying has been completed and most easement plans have been signed by shareholders.

Easement documents have been sent to shareholders with a good number returned. **If you have not yet signed the paperwork**, please do so at your earliest convenience.

It is important to note that the documents ***must be witnessed by a trusted professional*** (i.e. a lawyer, accountant or Justice of the Peace) and you will need to take photo ID with you when you sign the documents as the witness needs to see the original photo ID of everyone signing. The witness will also take a copy of that ID and attach it to the documents.

This is not a requirement instigated by MHV but a Land Information New Zealand requirement which must be complied with for all land transactions. Tavendale and Partners are happy for people to call them and pop into their offices to sign if you wish or you can go to your local accountant, lawyer or a JP.

Team Changes

This season Mark Wilson and Ben Naylor are swapping the areas of open race that they manage. Mark will be managing the Main Race and Laterals 3, 4 and 5 while Ben will be managing Laterals 1 and 2.

It is important to extend the team's working knowledge of the scheme to provide flexibility.

Keith will continue working on the Valetta and Ruapuna pipelines.

Please continue to phone the duty phone for your area.

Lateral 1 & 2 duty phone

027 435 6256

raceoperations@mhvwater.nz

Main Race, Laterals 3, 4 & 5 duty phone

027 435 6252

raceoperations@mhvwater.nz

Valetta & Ruapuna Pipe duty phone

027 239 5199

pipeoperations@mhvwater.nz

RDR Intake and Fish Screen Tour

In July we took a bus load of shareholders up to the RDR intake at Klondyke. It was an opportunity to take a look around and learn more about the fish screen development. We also visited the MH intake and saw the location of the proposed Klondyke storage facility. Thanks to our tour guide Tony McCormick, RDRML Chief Executive for the insight.



Annual General Meeting

The 2021 Annual General Meeting is to be held on:

Thursday 14 October 2021

7:30pm

Hinds Community Centre

This year our AGM process is again being run by **electionz.com** and they will offer online voting prior to the meeting. This will be useful if you wish to vote in advance or if you are unable to attend the meeting.

The Notice of Meeting will be circulated shortly. If you receive your copy electronically, and do not wish to vote online, you will be able to request hard copies of voting forms or proxy forms from the Returning Officer.



You will be able to collect hard copies of the Annual Report and audited financial statements from the Irrigo office, 326 Burnett St, Ashburton.

If you have any queries, please contact Melanie Brooks.

We look forward to seeing you there.

Health and Safety around Waterways

With the start of the season upon us, now is an opportune time to remind everyone about the importance of awareness around water bodies.

There have been 58 preventable toddler drownings in NZ in the 10 years to 2019 with a further 7 in 2019.

Many of those have been in rural settings. The risks of water races, ponds, streams, rivers and drains are real and many of them are not fenced. We are making a concerted effort to raise awareness.

In 2019, MHV teamed up with Water Safety NZ, Ashburton District Council and the other irrigation schemes to make a video targeted at the importance of toddler supervision and the risks to be aware of in our rural setting.

Please make sure that all waterways and water bodies around houses, are securely fenced.

Many of our workers on farm may not have grown up around water, or understand the risks of water bodies, and it can take less than a minute for a child to drown.



Please review your health and safety procedures especially around communicating the risks and how you can mitigate them where possible.

Watch the video at www.mhvwater.nz

Rural Support Trusts

Rural Support Trusts (RSTs) are here for rural people and farming families across New Zealand.

On any normal day RST's know that living and working rurally can be a challenge. Sometimes things can get a bit too much.

If this might be you right now, or you are concerned for a family member or friend, call (0800 787 254) for a free, confidential chat.

RST's cover all aspects of rural agribusiness; dry stock, dairy, cropping, horticulture, forestry,

poultry, and rural contracting. They support all rural people - owners, managers, staff, and contractors.

Services are free and confidential.

SUPPORTING FARMER WELL BEING



Rural Support Trusts

0800 787 254

(Calls are answered by your local Rural Support Trust)

www.rural-support.org.nz



RuralSupport

Open Race Capacity Upgrade Works

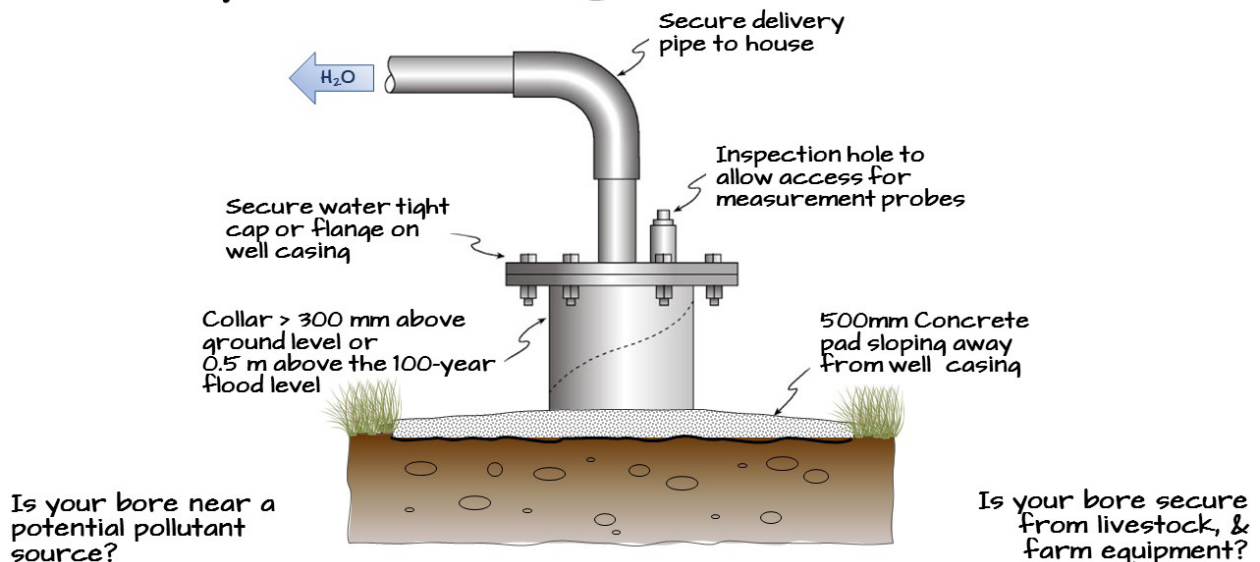
The Operations team and contractors have been busy over the winter period, working to upgrade infrastructure to enable the additional 20% delivery to shareholders in the MH line. There were several pinch points within the open race scheme which required work to enlarge culverts and races, and install new Rubicon gates.

COVID restrictions added time pressures but we are appreciative of the work that the team and contractors have put in to ensure water could begin flowing again at the start of the season.



Well Head Security

When was the last time you checked your drinking water bore?



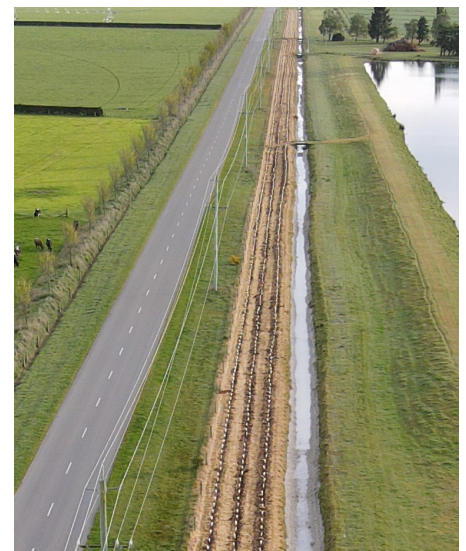
Race Planting

We have received enquiries from shareholders wishing to plant within the easement alongside open races.

We recognise that planting and biodiversity brings many environmental, cultural and aesthetic benefits, and we encourage this throughout the scheme. However historically we have not encouraged planting of races, due to potential blockages from debris, plant root system compromising race banks and plantings limiting access to the race for inspection, cleaning and future alterations.

We have recently approved some planting trials. These trials are subject to strict planting criteria and annual monitoring and the onus is on the shareholder to rectify or remove planting should there be unintended consequences to the planting.

If you are considering planting alongside a race, please contact Sam Anderson to discuss.



NEED TO TALK?

1737

free call or text
any time