

MHVwater Scheme News

Valetta pond inlet works

Reminders about our Water Bodies

With the irrigation season kicking off on **10 September**, it is timely to point out a few reminders about water races and water bodies.

Swimming is prohibited

Flows can be deep, swift and unpredictable in our races. Some races have culverts and syphons which could be fatal if swept into. Please ensure that family, friends and staff are aware that swimming is not allowed in our races or our ponds.

On farm health and safety and fencing around houses

Please make sure that as a minimum, **all houses around waterways are securely fenced**. Many workers on farms may not have grown up around water, or understand the risks of water bodies, and it can take less than a minute for a child to drown.

Please review your health and safety procedures especially around communicating the risks of water to your staff, and how you can mitigate them where possible.





Unauthorised Repairs

When high rainfall events or flooding occurs, it can be tempting to cut channels in irrigation and stockwater races to drain water from your property.

Not only does this contravene clause 8.2 of the Terms of Water Supply, it could also cause additional damage to properties further down the network by inundating these properties with additional water.

If a flood or high rainfall event does occur, our operations team will manage water in races following strict protocols, to ensure minimal damage to infrastructure and properties.

If you have serious concerns during such an event, please contact your duty phone in the first instance.

Race cleaning

Tree debris in races causes unnecessary blockages of downstream MHV infrastructure and Shareholder irrigation systems. Please ensure you remove any vegetation debris as soon as possible to avoid blockages and damage.



Vehicles in races

With approx. 320km of open races we remind you to please be careful around the races.

If you see a vehicle in a race please call your Scheme Operator (once everyone is safe) so we can manage any possible spills, water flow levels, to aid safe recovery and ensure we are aware of any damage.

Water Ordering in Open Race

With the new season nearly upon us, you will soon need to order water for your open race property.

Go to www.mhvwater.nz and click on the **Water Ordering** icon.

You will be taken to the login screen where you will be prompted to enter your User Number and Password.

Your **User Number** is your first and last name with no spaces. This can be in upper or lower case i.e. JOEBLOGGS or joebloggs

If you need assistance with your password, please contact the office on 03-307-8389 or info@mhvwater.nz.



If you have a new team member requiring access to water ordering also contact the office or Sam Anderson on 027 435 6251 or sam@mhvwater.nz

For further help with water ordering, visit our website <https://www.mhvwater.nz/river-flow-information> and click on Water ordering via computer or mobile to view a user guide.

Water Ordering via Mobile

Water Ordering via Computer

Contact your duty phone

Lateral 1 & 2 duty phone

027 435 6256

raceoperations@mhvwater.nz

Main Race, Laterals 3, 4 & 5 duty phone

027 435 6252

raceoperations@mhvwater.nz

Valetta & Ruapuna Pipe duty phone

027 239 5199

pipeoperations@mhvwater.nz

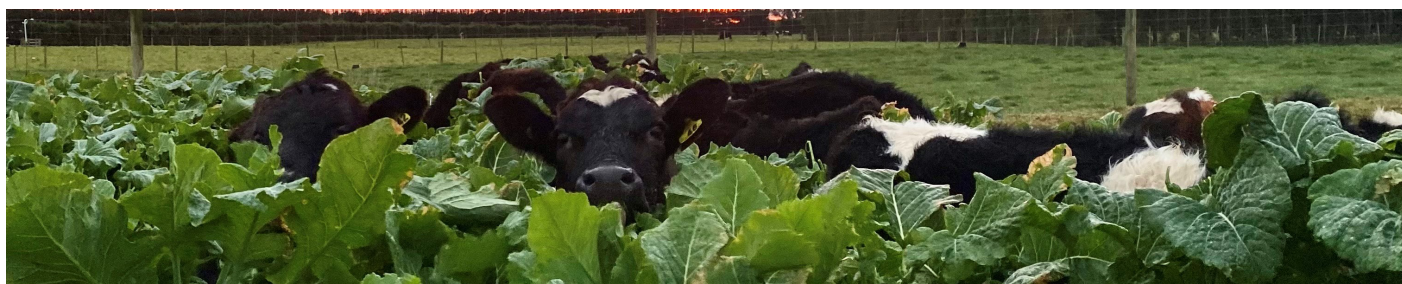
Winter grazing planning

With planning for next year's winter feed well under way, please ensure your maximum winter grazing area is as detailed in your Authorised Land Use. The definitions of winter grazing is as follows;

NES-F Winter Grazing means the grazing of livestock on an annual forage crop between 1 of May and 30 of September (including sheep on oats)

LWRP Winter Grazing includes cattle on brassica and root vegetables between 1 of May and 30 of September
Note – winter grazing includes fodder beet used for transitional grazing.

If you are planning on increasing this area, resource consent from Environment Canterbury and MHV approval will be required prior to the activity being carried out.



Advanced Mitigation Workshop

What is Advanced Mitigation? How can I achieve it?
How much will it cost me?

Join us for a discussion featuring a panel of farmers who are at Advanced Mitigation, or close to it. They will share what they have done under each of the targets to achieve this level.

Advanced Mitigation is modelled as **cost neutral** actions, so the focus is on reaching this level at minimal cost.

We will hold **two** sessions, guided by MHV and supported by a technical expert.

Wednesday 11 October 2023 - 12:30pm at Ruapuna Hall (BBQ lunch from 12pm)

Tuesday 24 October 2023 - 7pm at Hinds Community Centre.

If you have any questions, please contact Nicole.

2022/23 FEP Audit Results

Overall, 88% of audits achieved an “Advanced Mitigation” or “A” FEP Audit grade in the 2022/23 season. This is down from 90% in the 2021/22 season.

The FEP Audit grades are really important as they show progress in improving the on farm environmental performance within the MHV command area and are used to calculate nitrogen losses as part of the annual compliance report which is provided to Environment Canterbury.

The majority of the “B” and “C” grades issued are due to the requirements of the irrigation maintenance target not being met. The maintenance target requires bucket testing of all pivots, linear systems and rotorainers on a property and achieving a distribution uniformity of at least 0.8, and application depth testing for all guns, sprinklers and k-lines within three years of the FEP Audit. This irrigation season we will again provide a cost recovery bucket testing service available for Shareholders and have buckets available to borrow.

Please contact Nicole if you wish to book in the Bucket Testing service or to borrow the buckets.

Scheme Introduction Workshop

Do you have a new manager or new staff, or do you want to learn more about the scheme and where the water comes from?

We are offering a Scheme Introduction workshop the morning of **Wednesday 11 October 2023**.

This will involve a bus trip to various sites around the scheme, seeing where the water comes from and providing an environmental and operational overview of the company.

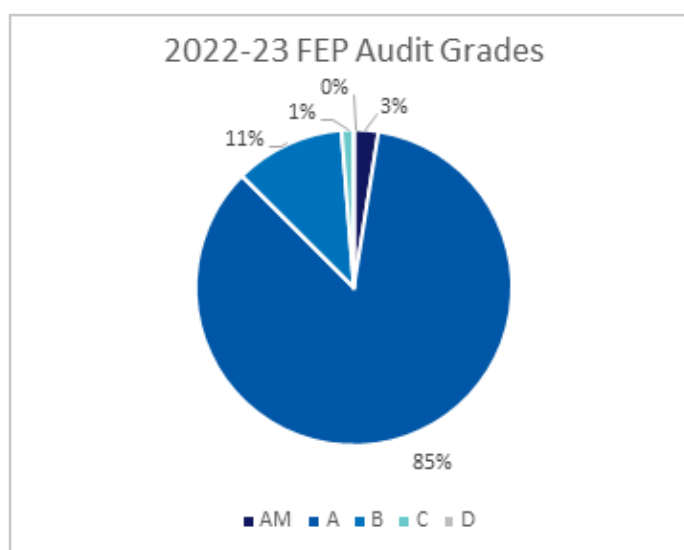
Contact Nicole on 027 205 2355 to book your seat or email nicole@mhvwater.nz

Operationally, it is important to keep us updated on key contacts on your property particularly if they need access to water ordering.

Please contact Sam on 027 435 6251 or sam@mhvwater.nz with full name, mobile number and email address of new managers.



Scheme introduction visit to Carew Ponds





Have you booked in your FEP update?

FEP updates occur every year.

We understand that certain times of the year are better than others for different land uses and hence we have prioritised dairy farmers to date. We continue to offer times with a view to completing all FEP's by the end of September.

Contact Nicole on 027 205 2355 or nicole@mhvwater.nz to book your FEP time.

Board Update

Congratulations to Evan Chisnall and Simon King for their re-election to the Board.

This year we had two director vacancies and received two nominations and therefore no vote is required.

The Board and team look forward to working with Evan and Simon over their coming term.



Evan



Simon



Wednesday 18 October
7:00pm
Hinds community Centre

SUPPORTING FARMER WELL BEING

Rural Support Trusts
0800 787 254

(Calls are answered by your local Rural Support Trust)

www.rural-support.org.nz



Science & Technology Fair

MHV will be sponsoring a prize as well as assisting with judging at this year's Canterbury-Westland Schools Science and Technology Fair.

At MHV, our shareholders are focused on making changes which support improvements in water quality – we saw an opportunity to reinforce this objective by supporting the Canterbury and Westland Schools Science fair with a prize for a student who promotes improvements to water quality in a natural setting. The annual science fair is for intermediate and secondary school students throughout the Canterbury and Westland regions and regularly attracts up to 400 entries.

Students must either plan and conduct an original investigation to answer a science question or follow the Technology Process to solve a real life problem.

Shortlisted students were interviewed by judges at Canterbury University. Since the first fair over 30 years ago, it has grown considerably in size and reputation to become one of the premier Science and Technology events in New Zealand.

Information about the fair can be found at:

[NIWA Canterbury-Westland Schools' Science and Technology Fair - \(canterburysciencefair.co.nz\)](http://NIWA Canterbury-Westland Schools' Science and Technology Fair - (canterburysciencefair.co.nz))